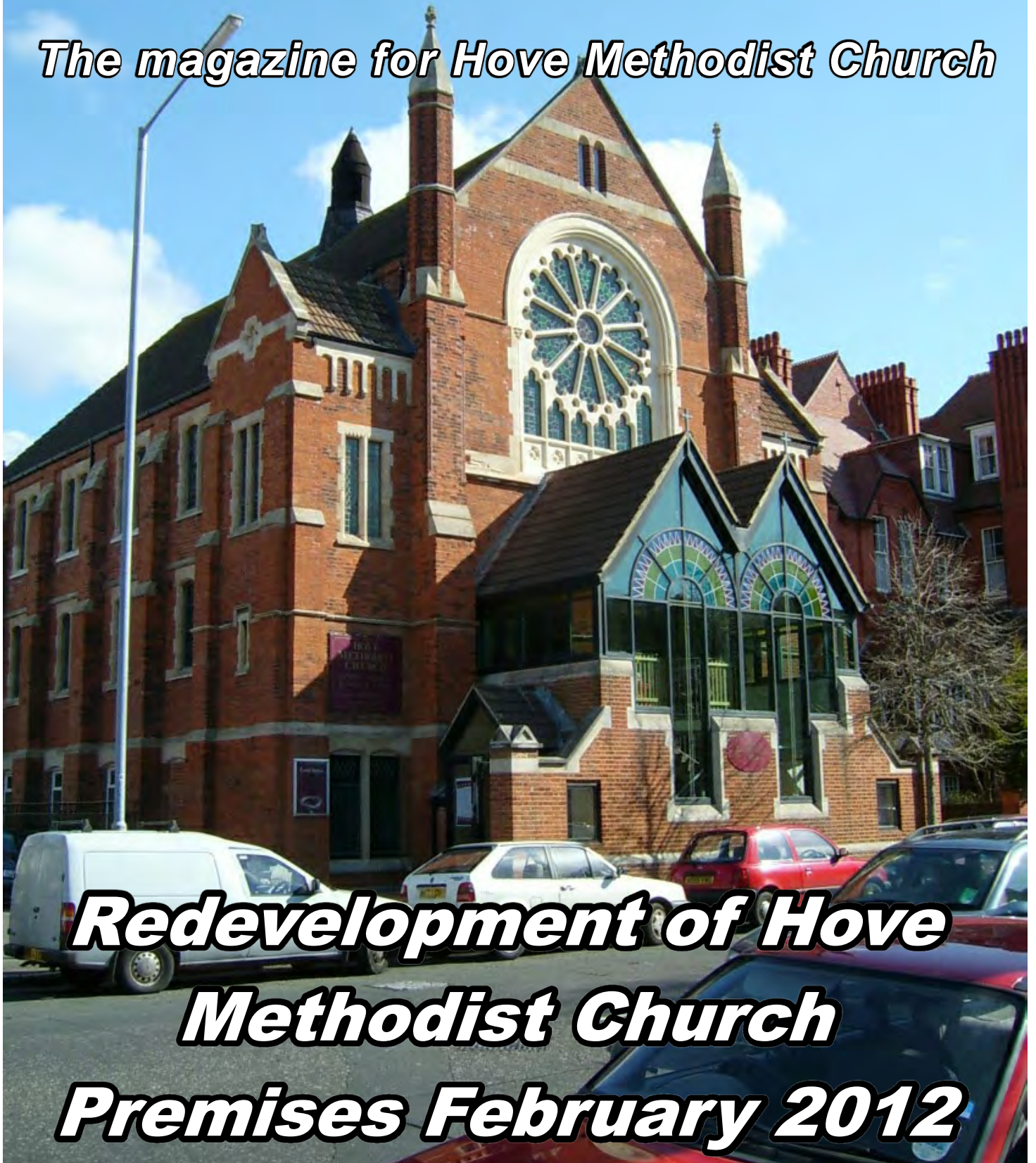




# **LINK**



*The magazine for Hove Methodist Church*



***Redevelopment of Hove  
Methodist Church  
Premises February 2012***

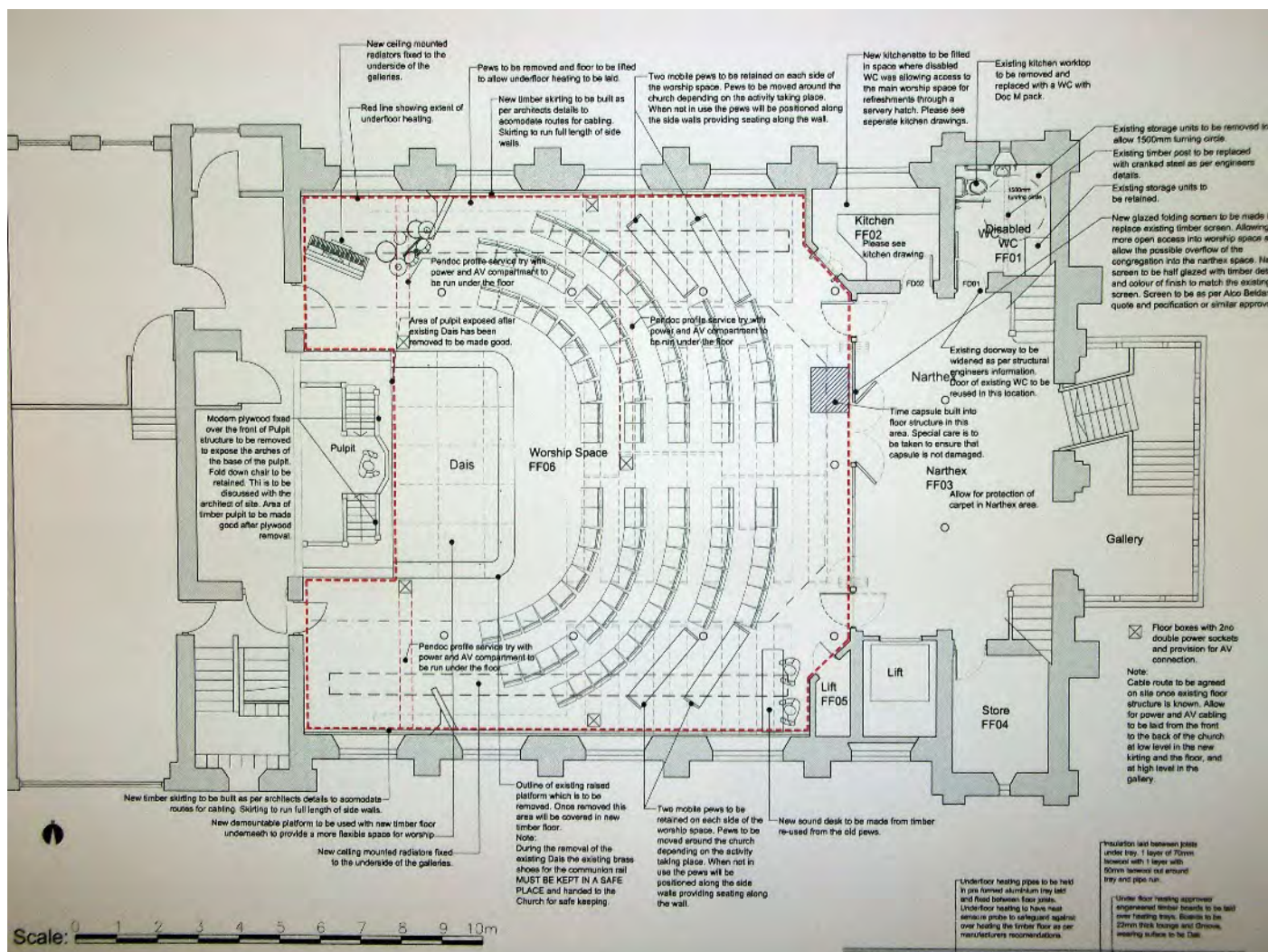
The purpose of this supplement is to inform the whole church family of the imminent changes to our sanctuary.

The work will commence very soon (end of February) and will last for about ten weeks.

We hope that, as well as informing our members and friends we can build some enthusiasm about this event.

Apart from changes such as carpets (we used to have linoleum) and electric lighting instead of gas (the original designs for our church included electric light but there was no supply to Portland Road), this will be the first time in 115 years that major modernisation works of the sanctuary will have occurred, apart from the excellent modernisation of the front entrance and south end of the sanctuary back in 1992.

Let's think how, when the work is completed, we celebrate the opening of our newly refurbished worship and community area. Perhaps we can have an Open Day and invite the community to come and enjoy the new facilities, and maybe other events throughout the summer.





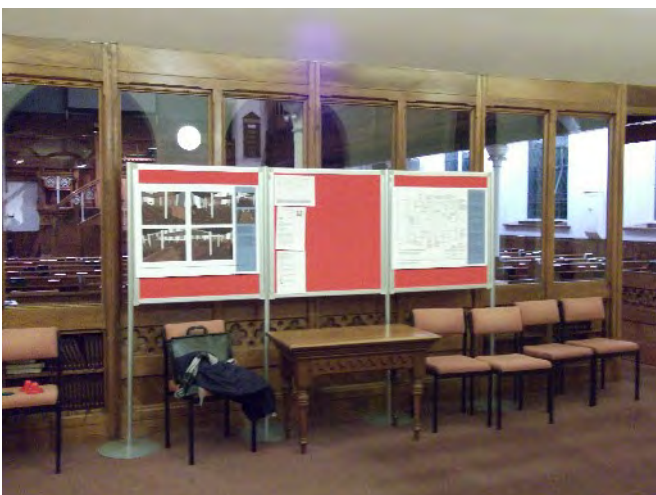
Organ protection; This will be carried out by the Church's organ restoration specialist.

All loose furniture will have been removed by the church family prior to start of works.

The stained glass windows throughout worship space are to be carefully protected with softwood framing wedged into the window reveals and covered with polythene sheeting.



The pulpit area will be shrouded with breathable synthetic sheeting, making allowance for work to be carried out on the pulpit with the removal of the plywood sheeting and the making good of the area exposed by the removal of the dais.



The modern timber glazed screen will be carefully disassembled as specified. The two existing doors and the outer frame are to not be removed, but the doors will be re-hung to open out into the narthex and fold back right against the screen.

## Kitchen and Toilets;

Strip out the existing Kitchen and Accessible toilet in preparation to swapping round these facilities.

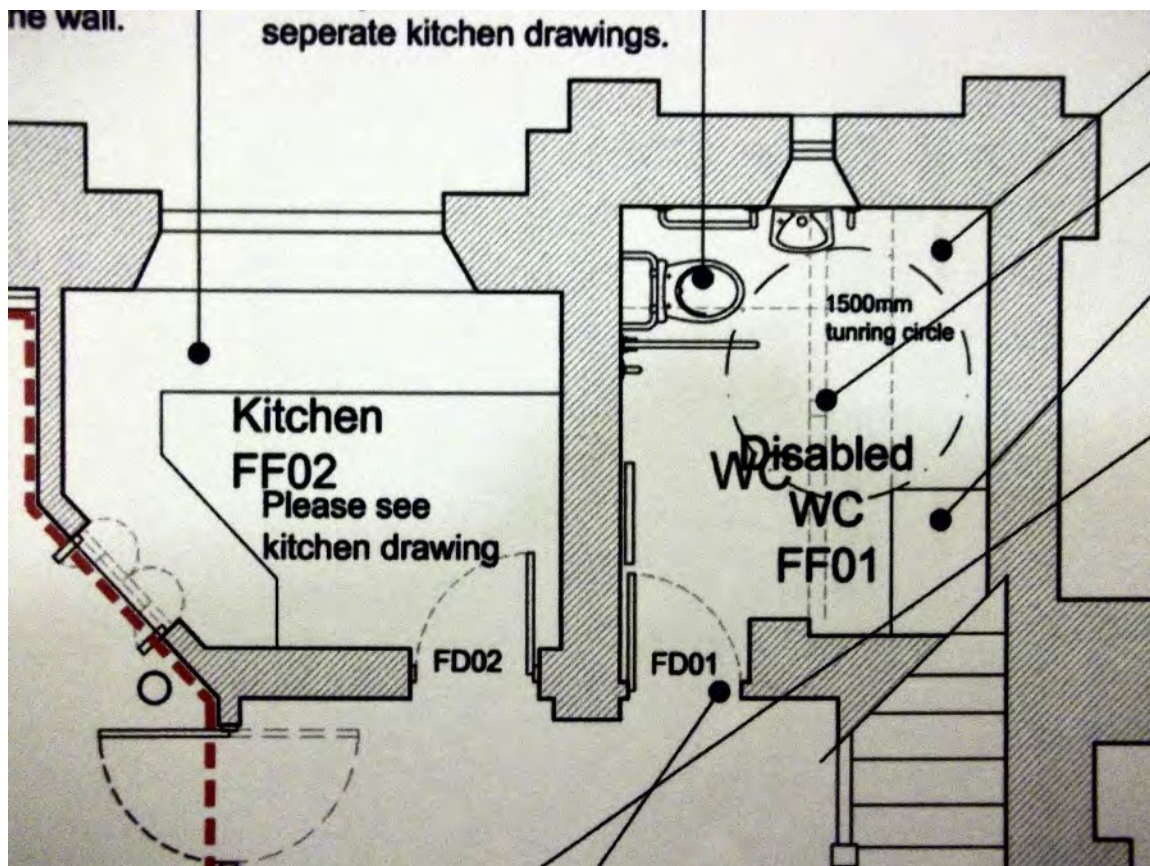
Form new hole in masonry wall to allow for the new serving hatch.

Carry out alteration to the timber supporting structure of the stair case in the existing kitchen. Allow for making good to existing plaster and wall finishes in lime plaster and ventilation for the new kitchen and W.C.

Supply and fix kitchen units with stainless steel sink as specified.

Allow for 300mm tiled splash-back above worktop and to WC wash hand basin.

Kitchen worktops to be 850mm high. Kitchen to comply with Building Regulations.



New wire and pipe routes to be run through walls for the installation of the new under-floor heating manifold and the installation of the new boiler as specified and remove materials from site. Disconnect and strip out existing heating pipes.

Lift and remove from site all existing timber floor boards in worship space. Install under floor heating and lay new area of hardwood flooring in worship space as with 20mm "Fenland" oak pre-finished wood engineered floor strips, laid on existing joists, with 100mm Rockwool insulation.

Supply and fix movable folding partitions as designed.

Make alterations to existing heating system as specified.  
Electrics; new power outlets throughout the scheme and stage boxes at appropriate points.  
Provision for the new lighting, with dimmers to be relocated in new AV desk.  
Timber work to existing galleries:



Allow for possible timber repairs and additional timber support to structure of underside of galleries where new heating is to be fitted.

New chairs (already purchased) will be placed in the sanctuary when the building work is completed.



## **Audio-visual Improvements (Report to Church Council of 5-2-12)**

The forthcoming redevelopment of our Sanctuary is designed to make the area more adaptable and suitable for a variety of uses and users, including both worship and letting's. This will not only improve conditions for our worship services, but also for our service to other groups in the community who make use of the premises. In order to keep pace with the current redevelopment and anticipated demands in the future, it is not just the building but also its facilities that need improvement.

Along with the catering and toilet facilities, this includes our audio-visual system. Our current system has evolved over a number of years and suffers from a number of drawbacks. The laying of a new floor and revision of the electrical system offers a unique opportunity to make the desired changes with minimal cost and disturbance. Our Redevelopment Group has therefore obtained advice and quotes from several specialist AV contractors and chosen, TS Professionals, as best-suited for our contract. Their quote includes the following;

1. Clearer, more legible, visual displays for both congregation/audience and worship leaders/speakers. This will be achieved with a retractable central screen that covers the three north windows in combination with a more powerful projector at the front of the balcony. Two new monitors will be mounted on the front angles of the balcony for worship leaders, musicians and circular seating patterns. Existing small monitors will be relocated to the organ and AV desk.
2. A remote-controlled camera will enable everyone, including our organist, to see a magnified view of the focus of attention.
3. Better quality loudspeakers downstairs and new base ones beneath the pulpit will enhance our sound system.
4. New microphone and signal connections for worship leaders/speakers and musicians will give them more choice of location and the AV operator ability to balance inputs.
5. An enlarged AV desk, comfortably seating two operators, will have more room for and easier access to, our present and additional equipment.
6. New cabling will be largely hidden below floor level and not subject to interference from our loop system.
7. Two monitors, visible from our church entrances, will be controlled via the Internet, and will enable us to constantly publicise our notices, news and events to passers-by and users of the building.

The AV improvements need to be agreed by the Church's Listed Buildings Advisory Committee, and will need to be synchronized with the work on the main contract.

The Circuit is promoting the use of AV, so that preachers in all its churches will have access to similar facilities and can use the same material wherever they are leading worship, and there is reasonable expectation that the Circuit will contribute substantially to the cost of these improvements.